

# MONTHLY MEMBERSHIP PROGRESS REPORT

District 202 M

Results as of: 5/31/2020

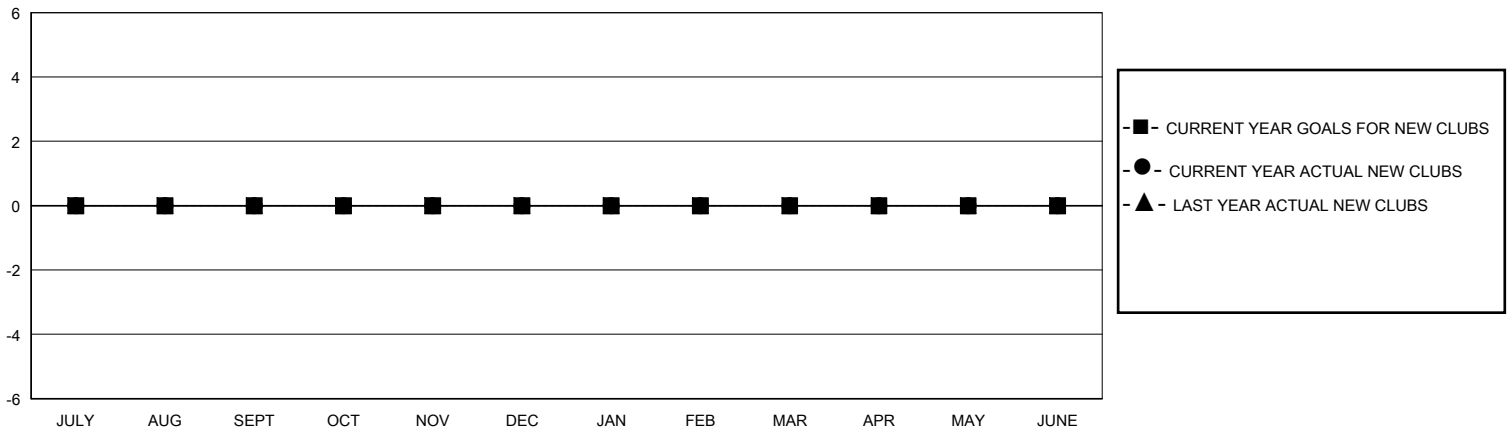
GMT:

LOCATION NEW ZEALAND

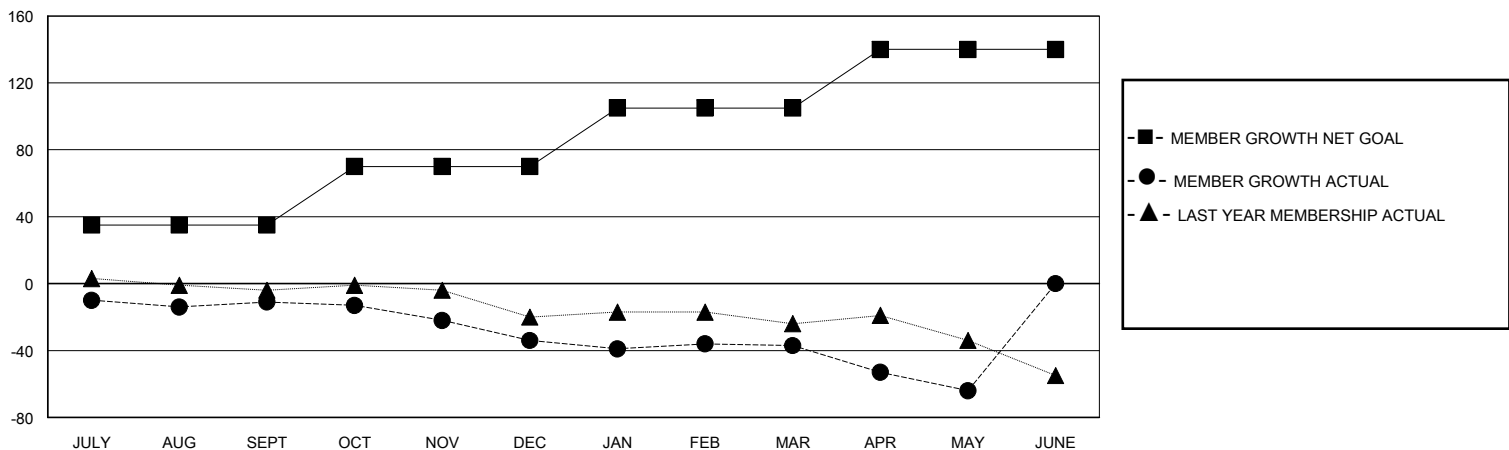
GMT CA

| Clubs                 |               |           |               | Members               |                        |                      |  |
|-----------------------|---------------|-----------|---------------|-----------------------|------------------------|----------------------|--|
| RESULTS FOR 2019-2020 |               |           |               | RESULTS FOR 2019-2020 |                        |                      |  |
| QUARTER               | NEW CLUB GOAL | NEW CLUBS | DROPPED CLUBS | QUARTER               | MEMBER GROWTH NET GOAL | MEMBER GROWTH ACTUAL | DROPPED MEMBERS ACTUAL (including transfers) |
| JULY/AUG/SEPT         | 0             | 0         | 0             | JULY/AUG/SEPT         | 35                     | 13                   | 22   |
| OCT/NOV/DEC           | 0             | 0         | 0             | OCT/NOV/DEC           | 35                     | 9                    | 31   |
| JAN/FEB/MAR           | 0             | 0         | 0             | JAN/FEB/MAR           | 35                     | 11                   | 14   |
| APR/MAY/JUNE          | 0             | 0         | 0             | APR/MAY/JUNE          | 35                     | 1                    | 28   |

GOALS AND ACTUAL NEW CLUBS CUMULATIVE



GOALS AND ACTUAL MEMBERS CUMULATIVE



|   |   |  |
|---|---|--|
| DROPPED CLUBS: 0  | 21 CLUBS OF 47 ADDED 1 OR MORE NEW MEMBERS                | <b>GENDER DISTRIBUTION</b><br>MALE 671 (63.24%)<br>FEMALE 390 (36.76%) |
| <b>DROPPED MEMBERS</b><br>DECEASED 19<br>CLUB CANCELLED 0<br>OTHER 76<br>TOTAL 95 | <a href="#">CLICK HERE FOR CUMULATIVE MEMBERSHIP DATA</a> | TOTAL FAMILY UNIT MEMBERS 118<br>FAMILY MEMBERS PAYING HALF DUES 60    |